

PHILIPS

Straightener

EssentialCare

Ceramic Tourmaline plates

Longer plates (100mm)

210C professional temperature



HP8321/03



Glossy and sleek with shine with 100mm long plates

Specially designed for speed and ease of use, the longer plates of the new Essential Care straightener allow you to get the straight look you want faster, while being gentle on your hair.

Sleek style

- Long plates for fast and easy straightening
- 210°C professional high heat for perfect results
- Shiny and frizz-free hair

Ease of use

- Closing lock to close the handle for easy and safe storage
- 1.8 m power cord
- Fast heat up time, ready to use in 60 seconds
- Universal voltage
- Swivel cord to prevent tangled wires
- 2 years of worldwide guarantee

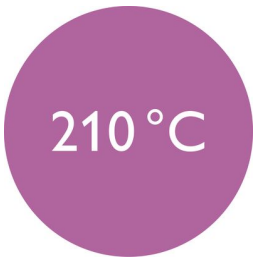
Highlights

Long plates



The longer plates enable a better contact with the hair and help you achieve perfect straightening results in less time.

210°C professional temperature



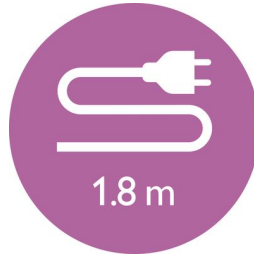
This high temperature enables you to change the shape of your hair and gives you that perfect look you want.

Instant heat up



The straightener has a fast heat up time, being ready to use in 60 seconds

1.8 m cord



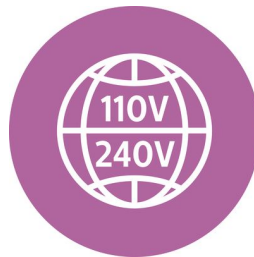
1.8 m power cord

Handle closing lock



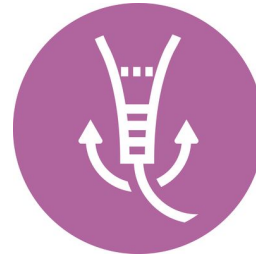
The straightener has a closing lock mechanism. Located at the base of the straightener, this locks plates, making storage quick and easy and helping to protect the straightener from accidental damage.

Universal voltage



Worldwide voltage for getting the perfect travel companion

Swivel cord



Useful swivel cord technology rotates the cord to prevent tangled wires.

2 years guarantee



2 years of worldwide guarantee.

Ceramic Tourmaline coating



Ceramic Tourmaline plates emit negative ions which creates shiny, static and frizz-free hair.

Specifications

Technical specifications

Heating time: 60s

Cord length: 1.8 m

Color/finishing: black and silvertint

Maximum temperature: 210 °C

Long plates: 28X100mm

Voltage: Worldwide V

Features

Temperature: 210 °C

Swivel cord

Ion conditioning: No

Handle lock

Material plates: Ceramic Tourmaline

Storage hook

Swivel cord

Ceramic Tourmaline coating

Service

2-year worldwide guarantee

