

# PHILIPS

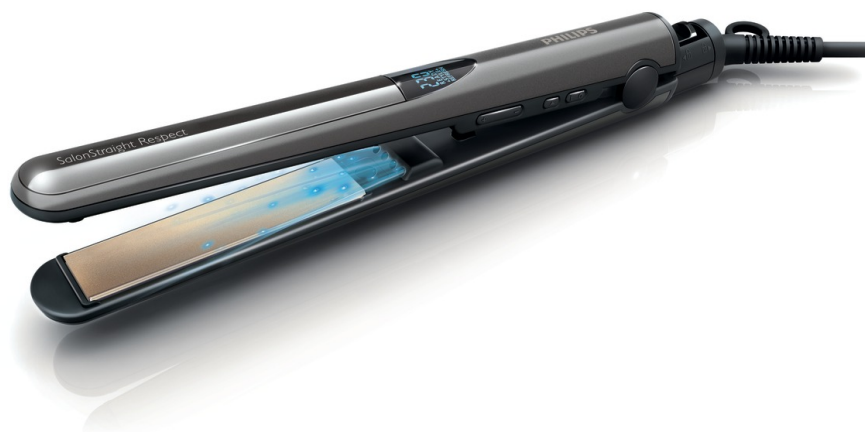
## Straightener

### SalonStraight

### Respect



HP8342



## Respect your hair day & night

### SalonStraight Respect

Philips offers you the unique Care Touch<sup>®</sup> setting to maintain your straight style for longer with less damage.

#### Beautifully styled hair

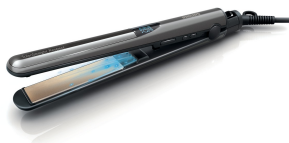
- Ceramic plates for smooth gliding and shiny hair
- Ion Conditioning for shiny, frizz free hair
- 230°C professional high heat for perfect salon results

#### Less hair damage

- Healthier restyling with autosettings to gentler temperature
- EHD+ technology for more protection and shinier results

#### Ease of use

- Digital settings with adjustable heat to get smooth results
- Fast heat up time, ready to use in 30 seconds
- Automatic shut-off after 1 hour
- Easy lock for convenient storage
- Including glamorous pouch for easy storage
- Swivel cord to prevent tangled wires
- 2 m cord for ease of use



# Highlights

## Style refresh



Automatic setting for healthy restyling. Maintain your style all day, while respecting the quality of your hair

## Ion Conditioning



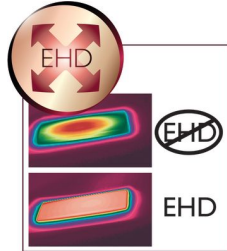
Ion Conditioning for shiny, frizz free hair

## Digital settings



Digital settings with adjustable heat to get smooth results with all hairtypes

## EHD+ technology



Advanced Philips EHD+ technology means that your styler will always distribute the heat very evenly - even at high temperatures, and prevents damaging hot spots. This gives added protection and thus helps to keep your hair healthy and shiny.

## Instant heat up



The straightener has a fast heat up time, being ready to use in 30 seconds

## Automatic shut-off after 1 hour



Automatic shut-off after 1 hour

## Easy lock

Easy lock for convenient storage

## Including glamorous pouch

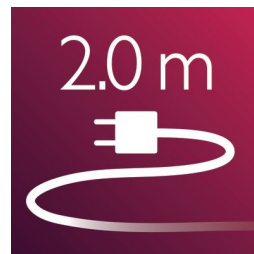


Including glamorous pouch for easy storage

## Swivel cord

Useful swivel cord technology rotates the cord to prevent tangled wires.

## 2 m cord



The long cord gives you maximum flexibility.

## 230°C professional temperature



This high temperature enables you change the shape of your hair, and gives you that perfect look like you've just come from the salon.

# Specifications

## Technical specifications

Maximum temperature: 230 °C

Heater type: PTC

Heating time: 30s

Voltage: 110-240 V

## Features

Ceramic coating

Ready for use indicator

Swivel cord

## Hair type

End result: Straight

Hair thickness: Medium, Thick, Thin

Hair length: Long, Medium, Short

## Service

2-year worldwide guarantee

