

# PHILIPS



IPL - Hair removal  
device

Lumea Prestige

4 intelligent attachments

Underarms, bikini, body, face

With SmartSkin sensor

+ Satin Compact pen trimmer



BRI949/00

## Enjoy 6 months\* of hair-free smoothness

Intelligent attachments designed for best results

Philips Lumea Prestige, our most powerful IPL yet, designed for your body's curves and easiest at-home experience. Uniquely curved, intelligent attachments perfectly fit your curves and adapt the treatment programs for each body area.

### Maximum freedom, minimum hassle

- With SmartSkin sensor
- No replacement parts, no hidden costs
- FREE Lumea App for a personal coach at your fingertips

### Long-lasting smooth skin with Lumea IPL technology

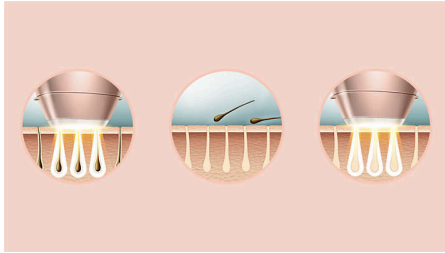
- Expert IPL technology at-home, developed with dermatologists
- Proven safe and effective treatment
- Suitable for a wide variety of hair and skin types
- SenseIQ technology for personalized hair removal

### Specialised treatment of different body areas

- Intelligent attachments adapt programs for each body area
- Body attachment with curved-in design
- Bikini area attachment with extra light filter
- Underarm attachment with curved-out design
- Precision face attachment with extra filter

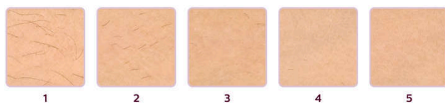
## Highlights

### Lumea prevents hair regrowth\*



IPL stands for Intense Pulsed Light. Philips Lumea applies gentle pulses of light to the hair root, putting the follicle into a resting phase. As a consequence, the amount of hair your body grows gradually decreases. Repeating the treatment leaves your skin beautifully hair free and touchably smooth. Treatment to prevent hair regrowth is safe and gentle, even on sensitive areas. Philips Lumea is clinically tested and developed with dermatologists for easy and effective treatment, from the comfort of your own home.

### Proven effectiveness



Objective studies show up to 92% hair reduction in as little as 3 treatments\*\*. The first 4 treatments must be carried out every 2 weeks, after which you should already be able to see the desired results. To maintain your results, simply touch up every 4 weeks. After just 8 touch up treatments you can be hair-free for 6 months\*. To enlarge this picture, please click on the image in the image gallery at the top of this page.

### Suitable hair and skin types



Philips Lumea Prestige works effectively, easily and safely on a wide variety of hair and skin types. It works on naturally dark blonde, brown and black colored hairs and on skin tones from very white to dark brown. As with other IPL based treatments, Philips Lumea cannot be used to treat white / grey, light blonde or red hair and is not suitable for very dark skin. This is due to the high contrast required between the pigment in hair color and pigment in the skin tone.

### Treatment of body areas



Your body is unique. And its skin, curves and contours should be treated uniquely too. Lumea's total-body attachments are shaped to perfectly fit every curve, and will adapt programs tailored to each body area. Treatment windows are designed to maximize contact with your skin to ensure light doesn't escape, enabling effective and gentle treatments even on delicate or sensitive areas.

### Underarm attachment



Specially designed to treat hard-to-reach underarm areas, the intelligent underarm attachment is medium-sized with a 3 cm2

window. When the attachment is clicked on to the device it adapts a tailored program for your underarm area. 86% of women satisfied with hair reduction on underarms\*\*\*\*.

### Bikini attachment



Click on the intelligent bikini attachment and it will adapt a tailored program specifically for that area. It has an optimal 3 cm2 window with a transparent filter for extra comfort and the curved design compliments your body's contours for maximum contact, efficiency and comfort. 78% of women satisfied with hair reduction in bikini area\*\*\*\*.

### Body attachment



The intelligent body attachment has our largest treatment window at 4.1 cm2 so it's perfect for a fast treatment on larger body areas like legs, arms and stomach. The curved-in design closely follows your body's contours for maximum skin contact. Click on the attachment it adapts a tailored program specifically for your body area. 83% of women satisfied with hair reduction on legs\*\*\*\*.



## Highlights

### Face attachment



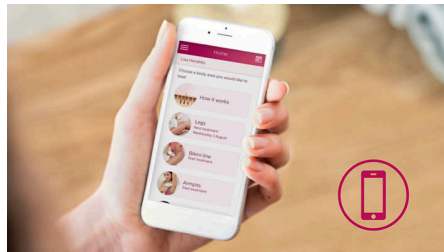
The face attachment has been thoughtfully designed to have a small, flat 2 cm<sup>2</sup> window so you can effectively and gently treat hair on your face. Ideal for your upper lip, chin or jawline, the attachment also has an extra filter integrated within. When added to the device, the intelligent attachment automatically adapts the light treatment for your face. 84% of women satisfied with hair reduction on face\*\*\*\*.

### SmartSkin sensor



Philips Lumea Prestige has 5 energy settings and makes it easy for you to choose one thanks to the SmartSkin sensor. The SmartSkin sensor indicates the most comfortable setting for women with a similar skin tone to yours.

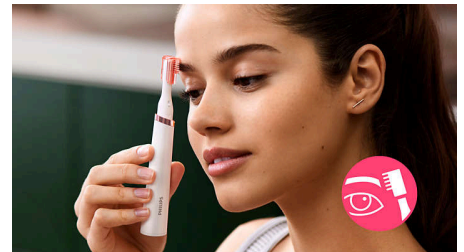
### FREE Lumea App



The Lumea App is free to download and offers a unique and personalized IPL experience – just for you. It is your very own personal coach to ensure you are getting the most out of your Lumea and using it in the correct way to achieve long-lasting results. The App helps you create your personalized treatment schedule per body area, with tips and advice during each treatment. All

you need to do is check the app regularly to make sure you are up to date with any notifications or reminders.

### Special Beauty Edition



The on-the-go trimmer from Philips is a discrete beauty tool that makes it quick and easy to remove even the finest facial hairs.

### No replacement parts needed



Philips Lumea is a complete solution that comes ready to work, straight out of the box. No refill cartridges or gels needed.

# Specifications

## Technical specs. attachments

**Body treatment attachment:** Window size: 4.1 cm<sup>2</sup>, Shape: Convex curved, Tailored treatment for body

**Face treatment attachment:** Window size: 2 cm<sup>2</sup>, extra filter, Shape: Flat, Tailored treatment for face

**Armpits treatment attachment:** Window size: 3 cm<sup>2</sup>, Shape: Concave curved, Tailored treatment for armpits

**Bikini treatment attachment:** Shape: Concave curved, Window size: 3 cm<sup>2</sup>, extra filter, Tailored treatment for bikini area

## Application areas

**Body areas:** Arms, Legs, Stomach

**Face areas:** Chin, Upper lip, Jawline

**Sensitive areas:** Underarms, Bikini

## Safety and adjustable settings

**Integrated UV filter:** Protects skin from UV light  
**5 light energy settings:** Adjustable to your skin type

**Integrated safety system:** Prevent unintentional flashing

**Skin Tone sensor:** Detects your skin tone

**SmartSkin sensor:** The right setting on demand

## Application mode

**Slide and Flash:** For quick application

**Corded/cordless use:** Corded

**Stamp and Flash:** For treatment on small areas

## Power

**Voltage:** 100-240 V

## Technical specifications

**High performance lamp:** Delivers <gt/> 250,000 flashes

## Service

**Warranty:** 2 years global warranty

## Items included

**Instructions for use:** User manual

**Storage:** Luxurious pouch

**Adapter:** 19.5 V / 4000 mA

## Application time

**Armpit:** 2.5 min

**Bikini line:** 2 min

**Face areas:** 1.5 min

**Lower legs:** 8.5 min

