

PHILIPS

AVENT

Double electric
rechargeable

Natural Motion Technology
Comfortable silicone cushion
8 + 16 settings



SCF398

The complete double pump

Quick, comfortable and loved by mums

Enter a new era of expression with the Philips Avent Electric Breast Pump. The perfect balance of suction and nipple stimulation, inspired by baby's drinking rhythm, with a soft cushion that gently adapts to your nipple size and shape. See more below.

Other benefits

- Choose the right teat flow for your baby

Personalised and easy to use

- Whisper-quiet motor keeps sessions relaxed
- 8 stimulation modes, 16 expression modes
- Start with your last session settings
- Insulated pouch for on-the-go ease
- Easily clean and assemble with fewer parts
- Pause when you want to

Gentle and comfortable

- Soft silicone cushion offers comfort for every body

Quick expressing, more milk in less time*

- Natural Motion Technology gets milk moving quickly*

Rechargeable battery and timer display

Highlights

Quick milk flow*



Milk starts to flow in as little as one minute thanks to our unique Natural Motion Technology.** With a gentle latch-on and just the right massage and suction, it's no surprise that 97% of mums say the pump is effective*** and 100% of midwives recommend it.

Adapts to your nipple



Whatever your shape, the pump's soft, flexible silicone cushion meets your breast and nipple comfortably. Fitting 99.98%**** of breast sizes***, it adapts for a latch-on that's soft yet secure.

Finding the right teat is important



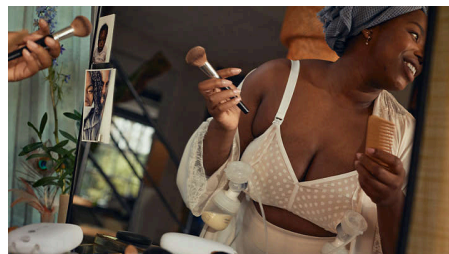
If your newborn baby is consistently not taking enough milk throughout the feeding sessions or has complications in getting milk, switch to a teat with a higher flow rate. If persistent feeding issues occur, consult a healthcare professional.

Find the right teat flow



Every baby feeds differently and develops at their own pace. We've designed a range of flow rates so you can find the perfect one for your baby and personalise your bottle. All of the Natural Response Teats are made of soft silicone.

Pumping on the go



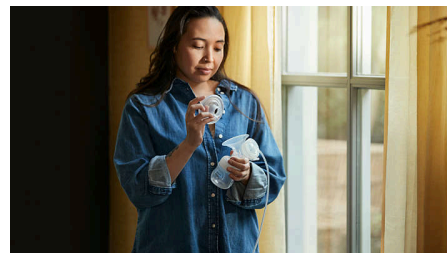
The motor unit is compact and rechargeable. So you can get ready for your day (or just make a cup of tea) without pesky power cords holding you back.

Personalise to your needs



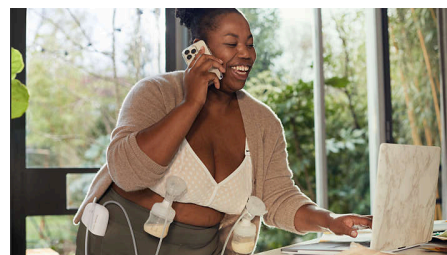
Get the most from every session with 8 modes for stimulating the flow of milk and 16 modes for expressing it. You can fine-tune as you go.

Easy to clean and set up



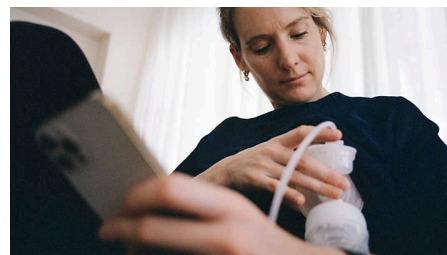
We designed our pump to be free from complexity. With just a few parts, it's also a breeze to clean and assemble.

Express anywhere discreetly



Our pump's motor is practically silent in use, so you can express at home (or anywhere) discreetly, and with one less distraction.

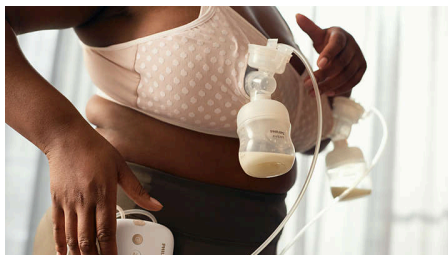
Start with your last session settings



The memory function automatically stores your last stimulation and expression settings. So all you need do is get comfortable and push start.

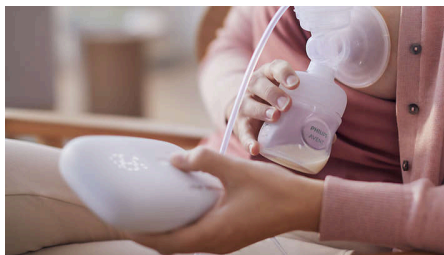
Highlights

Pause when you want to



You're in control. With one-touch pause/play, you can take a break from your session then resume it whenever you're ready.

Keep track of your expression time



Little things count, like our pump keeping track of your expression time. Use the digital display timer to keep track of your pumping duration, per breast and in total.

Insulated pouch



Wherever you pump, the custom-fit pouch takes you there, keeping your kit insulated and neatly bundled together. The stylish fabric is easy to clean, inside and out.

Specifications

Power

Mains voltage: 100V - 240 V

Material

Breast pump: BPA free* (food contact parts only)

What is included

Disposable breast pad: 4 pcs

Expression kit: 2 pcs

Insulation pouch: 1 pcs

Micro-USB adapter: 1 pcs

Motor unit (Rechargeable): 1 pcs

Sealing disc: 2 pcs

Milk bags: 5 pcs

125 ml (4 oz) Bottle: 2 pcs

Slow Teat: 2 pcs

Functions

Soft and adaptive cushion: Gentle stimulation



* Based on milk flow initiation time (time to Milk Ejection Reflex - MER) results from clinical trial with 20 participants (Netherlands, 2019) compared to time to MER results for other Philips predecessor pump technology from Feasibility study with 9 participants (Netherlands, 2018).

* *For 1K-SE: 70% of the participants experienced MER within 60 seconds. Based on milk flow initiation time (time to Milk Ejection Reflex - MER) results from clinical trial with 20 participants (Netherlands, 2019) compared to time to MER results for other Philips predecessor pump technology from Feasibility study with 9 participants (Netherlands, 2018).

* **Based on product clinical trial results with 20 participants (Netherlands, 2019), average score for single and double electric breast pump; 95% of participants agree that our breast pumps are effective (single electric); 100% of participants agree that our breast pumps are effective (double electric).

* ***Based on: (1) Mangel et al. Breastfeeding difficulties, breastfeeding duration, maternal body mass index and breast anatomy: are they related? Breastfeeding Medicine, 26 April 2019, (109 participants, Israel); (2) Ziemer et al. Skin changes and pain in the nipple during the 1st week of lactation. Journal of Obstetric, Gynecologic & Neonatal Nursing, May 1993, (20 participants (Caucasian), USA); (3) Ramsay et al. Anatomy of the lactating human breast redefined with ultrasound imaging, 2005, (28 participants, Australia).

* ****Only associated with the bottle, and other parts that come into contact with breast milk. Following EU regulation, 10/2011.