

PHILIPS



IPL Hair Removal device
with SenseIQ 2.0

Lumea IPL 7000 Series

Smart sensors

5 intensity settings

1 attachment

Lumea IPL app



BRI930/02

Enjoy 12-months of smooth skin*

Gentle, fast and effective hair reduction

Discover our IPL solution for long-lasting smooth skin**. Our Lumea IPL device with SenseIQ2.0 takes personalized hair removal to the next level.

Suitable for different body areas and skin tones

- 1 attachment designed for your body

Personalized hair removal with SenseIQ 2.0

- SenseIQ 2.0 for hair removal personalized to you

Optimize your routine with Philips Lumea IPL app

- Philips Lumea App for a personalised IPL experience

Clinically proven performance

- Clinically proven effectiveness

Suitable for different body areas and skin tones

- Suitable for a range of skin tones and hair colors

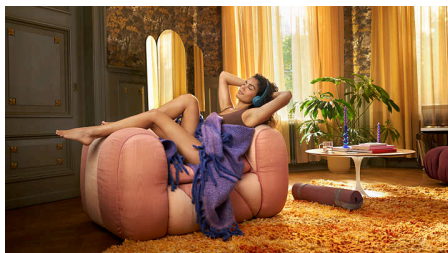
Lumea IPL 7000 Series

IPL Hair Removal device with SenseIQ 2.0

BRI930/02

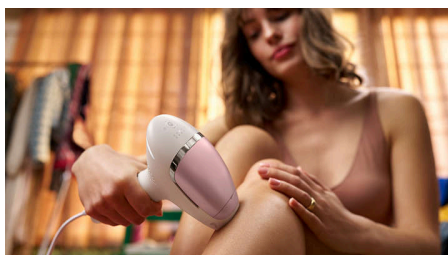
Highlights

Long-lasting hair reduction**



Lumea IPL uses warm, gentle pulses of light to put hair to sleep, preventing it from growing back for up to 12 months***.

Fast results



It only takes you 4 treatments to achieve up to 93% hair reduction on lower legs****. Treat every two weeks for the first four treatments, then save time by touching-up once a month. That's it, it takes no more than 11 minutes to cover both lower legs*****.

SenseIQ 2.0 technology



Our SenseIQ2.0 technology is here for a personalized hair removal treatment. With our signature combination of: Improved smart

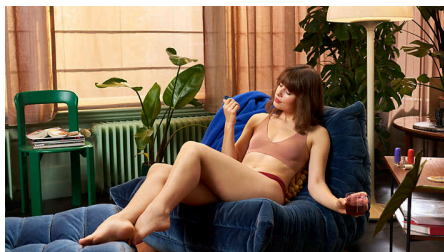
sensors that measure your skin tone and support you in selecting a setting for a comfortable treatment, one attachment designed for each curve of your body, and the Philips Lumea IPL app.

1 attachment



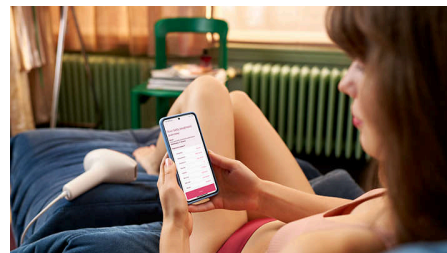
The body attachment is curved-in for optimal skin contact when treating large areas like legs. It also enables faster treatment with our largest window.

Clinically tested



Developed in cooperation with dermatologists for safe use***** and tested with more than 3000 women, Philips Lumea delivers clinically-proven performance from the comfort of your home. Chosen by over 5.5 million consumers worldwide.

Philips Lumea IPL app



Philips Lumea IPL comes with an App with guided steps that helps you get the most from your IPL.

For a range of skin tones



IPL requires contrast between the pigments in the hair color and the skin tone and therefore works on naturally dark blonde, brown and black hair and on skin tones from fair to medium brown. Check the chart to see if it's suitable for you. You can choose from multiple light intensity settings to tailor your treatment so it's comfortable for you, based on your skin test.

Lumea IPL 7000 Series

IPL Hair Removal device with SenseIQ 2.0

BRI930/02

Specifications

Safety and adjustable settings

Integrated UV filter: Protects skin from UV light

5 light energy settings: Adjustable to your skin type

Integrated safety system: Prevents unintentional flashing

SenseIQ 2.0: Setting for a comfortable treatment

SmartSkin sensor: The right setting indication on demand

Application mode

Slide and Flash: For larger areas (legs)

Stamp and Flash: For small body areas (bikini, armpit)

Corded / cordless use: Corded use

Technical specifications

High performance lamp: 400.000 flashes

Voltage: 100-240 V

Service

Warranty: 2 years global warranty

Items included

Instructions for use: User manual

Storage: Beauty bag

Adapter: 19.5 V

Cord: 2 m

Application time

Lower legs: 11 min*****

Consumer Trade Item

Height: 23 cm

Width: 11 cm

Length: 24.5 cm

Net weight: 0.819 kg

Gross weight: 1.153 kg

GTIN: 8720689018968

Country of origin: SI

Outer Carton

Height: 24 cm

Width: 23.4 cm

Length: 25.5 cm

Net weight: 1.638 kg

Gross weight: 2.587 kg

GTIN: 18720689018965

Pallet Layer

Height: 24 cm

Width: 80 cm

Length: 120 cm

Pallet

Height: 109.6 cm

Width: 80 cm

Length: 120 cm

Net weight: 98.28 kg

Gross weight: 171.439 kg

GTIN: 68720689018960

Technical specs. attachments

Body treatment attachment: Shape: Curved, Window size: 4.1 cm², Tailored treatment for body: areas below neckline

