

# PHILIPS

## Hairdryer

### ThermoProtect Ionic

2200W

ThermoProtect setting  
with massaging volume diffuser  
Ionic Care



HP8233/03

## Fast dry at a lower temperature with ThermoProtect with massaging diffuser & 11mm styling nozzle.

Protect your hair while enjoying fast drying results. This hair dryer has multiple speed and temperature settings. Features include ThermoProtect for fast drying at a constant caring temperature, Ionic Care & TurboBoost.

#### Easy to use

- Elegant, feminine design emphasising performance and quality
- 1.8 m power cord
- Easy storage hook for convenient storage
- Removeable air flow filter makes cleaning quick and easy

#### Beautifully styled hair

- Professional 2200W for perfect salon results
- Ultra slim styling nozzle of 11mm for precision styling
- Maximizes volume & boosts curls while gently massaging scalp
- Turbo boost for extra fast drying
- Six flexible speed and temperature settings for full control
- Cool Shot sets your style

#### Less Hair Damage

- ThermoProtect temperature setting
- Ionic conditioning for shiny, frizz-free hair

## Highlights

### Premium Design



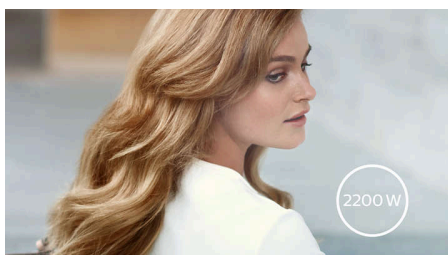
This hairdryer embodies a modern, sophisticated approach to design. Soft, fluid contours and elongated proportions subtly communicate femininity while precision detailing and high quality materials and finishes are evidence of the product's superior performance.

### ThermoProtect temperature



The ThermoProtect temperature provides the optimal drying temperature and gives additional protection from overheating the hair. With the same powerful airflow, you will get the best results in a caring way.

### Professional 2200W



This 2200W professional hairdryer creates a powerful airflow. The resulting combination of power and speed makes drying and styling your hair quicker and easier.

### Ionic conditioning



Give your hair instant care with ionic conditioning. Charged negative ions eliminate static, condition your hair, and smooth the hair cuticles to intensify hair's shine and glossiness. The result is smooth and frizz-free hair with beautiful shine.

### Speed and temperature settings



The speed and heat required can be easily adjusted to create the perfect style. Six different settings ensure full control for precise and tailored styling.

### Ultra slim styling 11mm nozzle



The ultra thin styling nozzle concentrates the flow of hair through the 11mm nozzle for precision styling on specific areas. Great for touch ups or to set your style.

### Turbo boost



The turbo boost button increases the airflow, to dry your hair even quicker.

### Asymmetric massaging diffuser



The asymmetric massaging diffuser has a unique asymmetric design that is contoured to the head, making it easier and more intuitive to use. The diffuser spreads the flow of air across the hair, drying hair more healthy, boosting volume and reducing frizz while the addition of massage helps stimulate the scalp and improve hair vitality. For best results, hold close to the crown and root area and let the diffuser's massaging textured pins encourage volume, add bounce and shape curls.

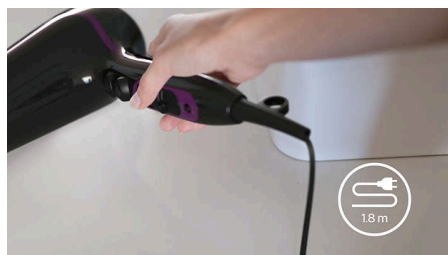
### Cool Shot



A must-have professional function for hair stylists. The Cool Shot button provides an intense burst of cold air. It is used after styling to finish and set the style.

## Highlights

### 1.8 m cord



Convenient to use thanks to the 1.8m power cord length.

### Easy storage hook



The rubberised hook is located at the base of the handle and provides another storage option, particularly convenient for use in the home or when staying at a hotel.

### Removeable air inlet filter



The removeable air flow filter of your hairdryer is easy to maintain. Simply click off to clean. Doing this regularly will prevent build up of dust and hair that can affect drying performance.

## Specifications

### Weight & dimensions

**A-Box Dimensions:** Length = 63cm, Width = 35cm, Height = 25cm

**A-Box Weight:** 6.3kg

**F-Box Dimensions:** Depth = 11cm, Height = 23cm, Width = 31cm

**Product size:** Width = 22cm, Height = 31cm,

Length = 10cm

**Product weight (excl. pack):** 0.6kg

**F-Box weight:** 1kg

### Technical specifications

**Cord length:** 1.8 m

**Voltage:** 220-240 V

**Color/finishing:** Glossy Black & Purple gradient

**Power:** 2200 W

**Frequency:** 50-60 Hz

**Wattage:** 2200 W

**Motor:** DC Motor

**Housing material:** PC

### Features

**Foldable handle:** No

**Ceramic coating:** Ceramic Element

**Cool shot**

**Diffuser:** Massaging volume diffuser

**Dual voltage:** No

**Travel pouch:** No

**Hanging loop**

**Ion conditioning**

**Number of attachments:** 2

**Nozzle / Concentrator:** Ultra slim styling 11mm nozzle

**Turbo Boost**

### Service

**2-year guarantee**

